

O2NE+

Oxygen Depletion Monitor

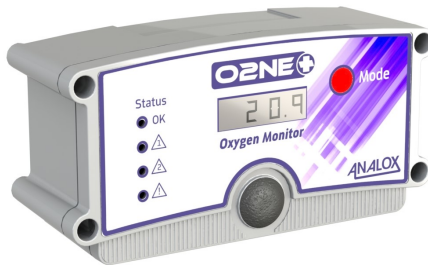
IT IS IMPORTANT THAT THESE INSTRUCTIONS ARE READ BEFORE USING THE O2NE+

THIS IS A PRECISION INSTRUMENT, THE OXYGEN SENSOR IS SUSCEPTIBLE TO SHOCK, DO NOT DROP

Packaging & Contents:

On opening your O2NE+, please check you have the following items:

- Oxygen Monitor (power lead and repeater cable attached)
- Alarm Repeater
- Test Certificate
- Drilling Template
- Rawl plugs, screws and cable clips for wall mounting



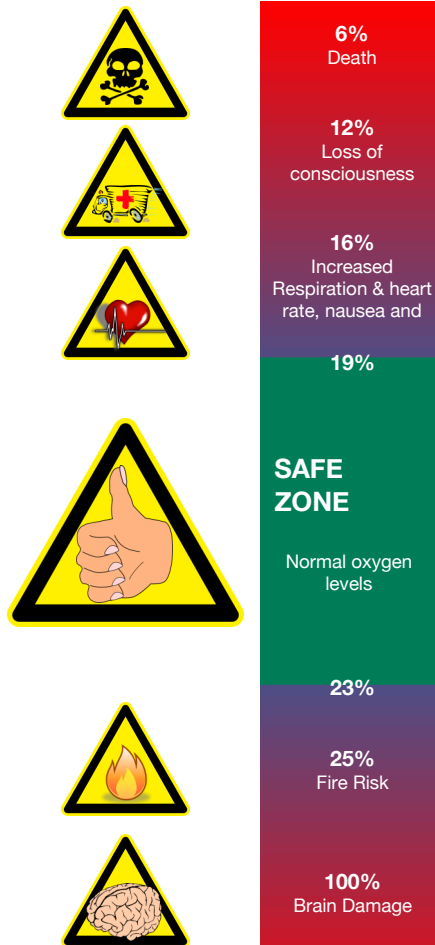
User Manual details:

Visit our website for the User Manual www.analoxsensortechnology.com

ANALOX

P0120-830-01

Health effects of Oxygen (O₂)

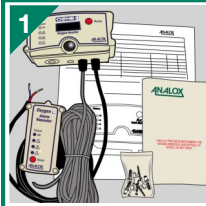


Every gas monitor installation should be risk assessed. The correct location of monitor(s) must consider the potential sources of gas leaks and the location of expected human occupation in the area. Where large areas must be monitored, it is often advised that no single monitor should cover a volume in excess of 80m³. The installation of more monitors should be considered where an area is complex in shape, filled with obstacles, has a lack of ventilation or air circulation, or if there are dead zones where gas can collect.

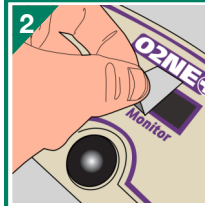
O2NE+ Fitting



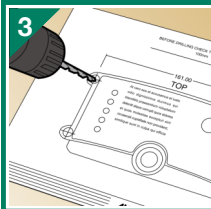
Do not apply power to the system until all connections have been correctly made.



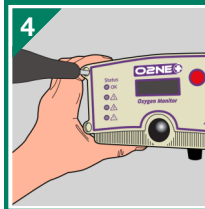
1 Remove O2NE+ from packaging



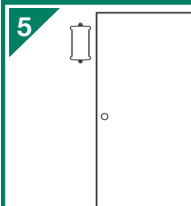
2 Remove the easy peel warning label from the display window



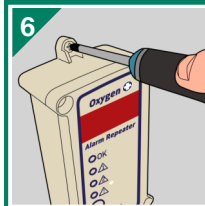
3 In chosen area at normal working head height, drill 4 holes using the Drilling Template as a guide



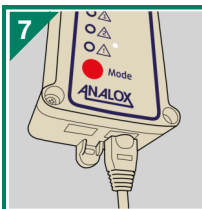
4 Secure Oxygen Monitor using Rawl plugs and screws



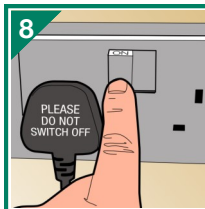
5 At the entrance to the designated area, drill 2 holes using the Alarm Repeater as a guide



6 Secure device using Rawl plugs and screws

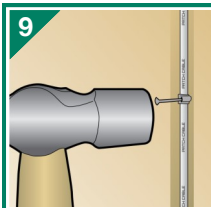


7 For power and data connection, quick connect the cable to the Alarm Repeater

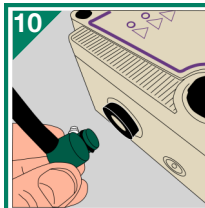


8 Apply power to the device

Normal operation will begin after a lamp and alarm test. The instrument should be allowed to **settle for a period of 2 hours** before sensor readings stabilise



9 Minimize trip hazards by securing cable with cable clips



10 It is now recommended you perform a full calibration adjustment, as per the User Manual.

Maintenance:

The O2NE+ does not require routine maintenance. Normal operation is indicated by a flashing green light. Pressing the Mode button initiates a lamp and alarm test in which all lights flash 4 times, together with the alarm horn.

A calibration adjustment should be performed 2 hours after initial installation and a proof test every 12 months thereafter, for more information and procedure see the User Manual.

Alarms:

If the O2NE+ detects O₂ levels below the first alarm level, the first red alarm indicator will begin to flash and the horn will sound.

If the O₂ concentration continues to drop below the second alarm level, the second red indicator will also begin to flash and the pace of the horn will increase. These conditions will also show on any Remote Alarm Repeaters.

Relay Option:

Your device may have been supplied with a pre-wired relay terminal box providing one or two Volt-Free single pole relays which will change over in certain alarm conditions. These are usually Fail-Safe and provide normally open and normally closed contact options.

Configuration is dependant on order. For more information and for connection instructions please see the User Manual.

Alarm 1 Light	Alarm 2 Light	Fault Light	Meaning	Action
On	Off	Off	Oxygen level below 19.5%	Inform someone you are entering, ventilate and check for any leaks within the area
On	On	Off	Oxygen level below 18%	DO NOT enter the area! Ventilate if possible— DO only enter wearing breathing apparatus, contact your gas supplier
Off	Off	On	Internal fault	Contact Service Engineer

Analox

15 Ellerbeck Court,
Stokesley Business Park, Stokesley
North Yorkshire, TS9 5PT UK
Tel: +44 (0)1642 711400

Analox USA

5981 Engineer Drive
Huntington Beach, CA 92649
Tel: 714 891-4478 or (877) SAFE-AIR (723-